

CREATING A BASIC TABLE BASED TEMPLATE (6.02)

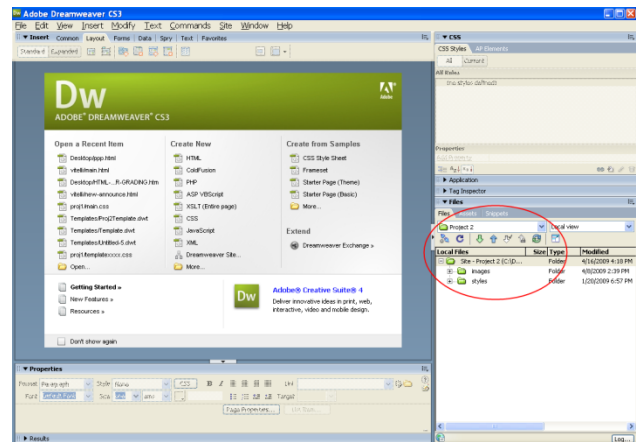
Why use a template?

A template is a sort of pattern that allows you to create multiple pages with the same basic design. Most templates have fixed areas that cannot be changed. When the web designer creates the template he/she pre-determines which sections will be editable. This ensures that each page created from the template has the same basic format and structure.

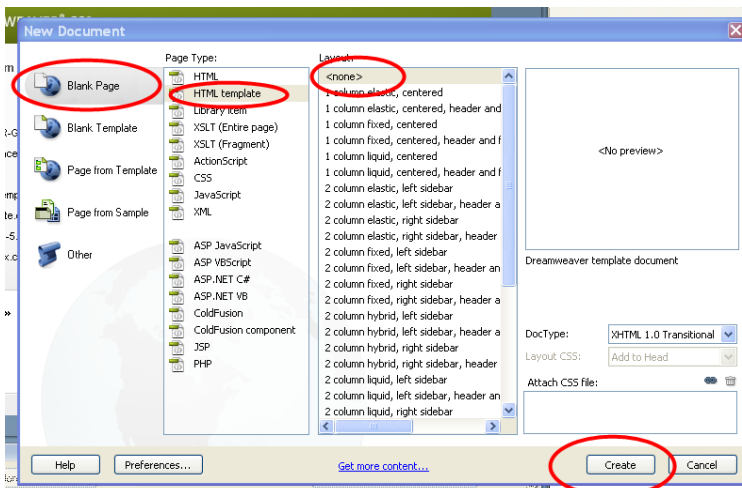
In addition to helping maintain a consistent design, templates also make editing the design easier. If the designer needs to change a design element, he/she can make the change on the template, which will automatically update every page that was created from that template. Without the use of templates, the designer would have to open each and every page in the site to make the change.

Before you start, make sure you site is properly defined in the Project 2 folder and correctly connected to the FTP Site. Here is a video to help:

[Defining your Site - Project 2](#)



Creating Your Template:



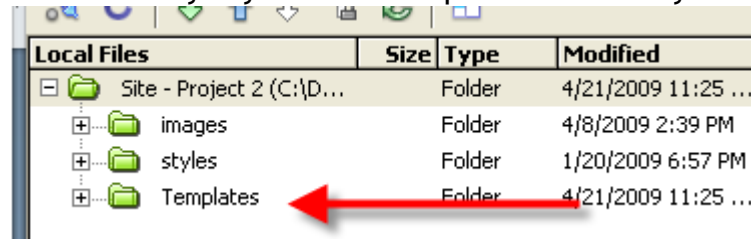
In Dreamweaver select FILE - NEW.

With Blank Page selected, choose HTML template under Page Type. Then under Layout, choose <none>

This is the start of your template.

Now save your template as Proj2Template. You may get a box warning that you do not have any editable regions...Just press OK. You will be adding these regions soon.

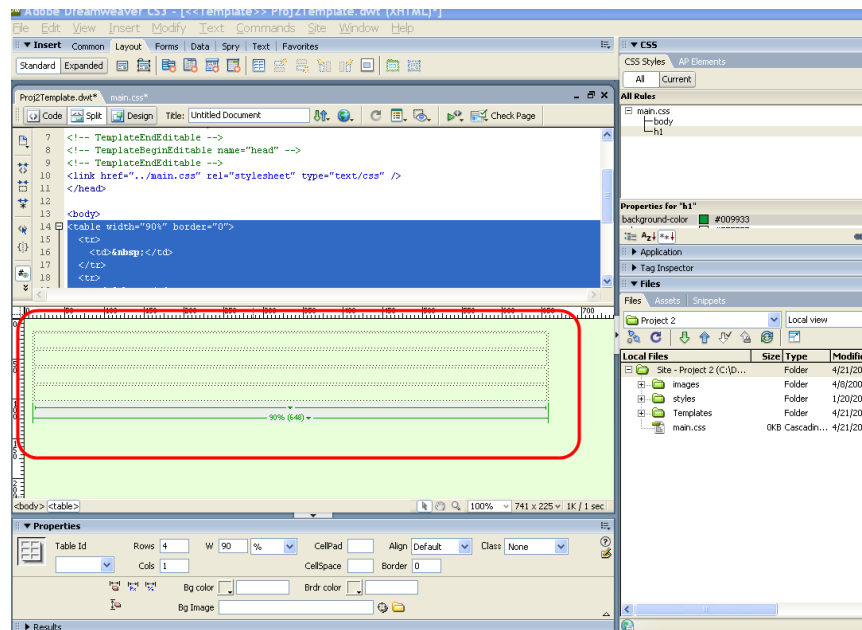
Your template is saved correctly if you see a templates folder in your file:



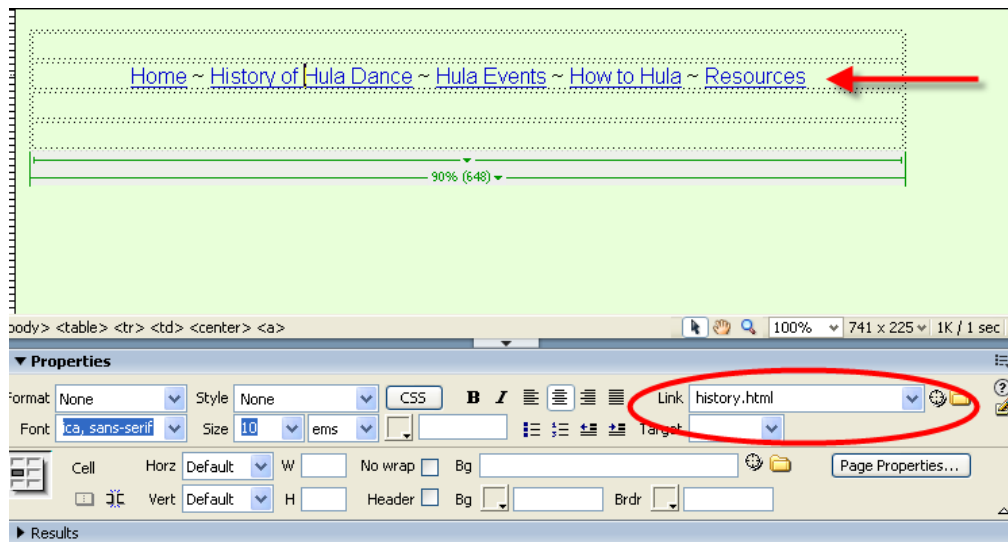
Now, go to TEXT - CSS STYLES - NEW and create your External CSS style sheet. Include styles for your body tag and h1 tag. Remember to choose a good background color and to change your text to a sans-serif font...like Arial.

Now let's work with your template. You can set your template up in any way, but in the following directions we will be using a table layout for a consistent look. You are welcome to use this setup exactly as it is or make any modifications to your site.

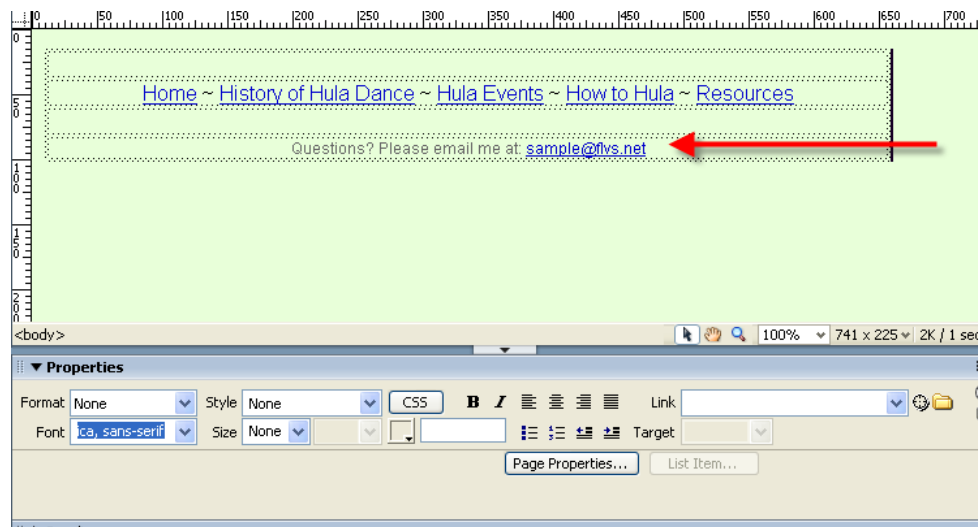
Go to INSERT - TABLE and insert a table with 4 rows and 1 column. Set your table width to 90%. Make sure there is no table header set! Press OK. You will want to center your table on your page.



In the second row we will be inserting your links. You should have chosen names for the pages in your site when you created your storyboard in 6.01. Go ahead and type your links in and link them to the correct file (you will be creating these files shortly!)



Now we are going to insert a footer in the last row of your table. This footer will be an email link if the user needs to contact you. You may want to format the footer in a smaller text. Use your CSS to do so!



Insert Editable Regions

The following areas will be editable on your separate pages.

Heading:

We are going to make the top row of your table a Editable Region with the heading of your page formatting with the h1 tag.

Put your cursor in the top row and type the title of your page. Center this and format as a h1 heading.

Highlight your text and go to INSERT - TEMPLATE OBJECTS - EDITABLE REGION to make this text editable. Name this Region: "Heading"

The screenshot displays the Adobe Dreamweaver CS3 interface. The main window is in SPLIT view, showing both the code and design views. In the code view, the following HTML is visible:

```
9 <!-- TemplateEndEditable -->
10 <link href="../main.css" rel="stylesheet" type="text/css" />
11 </head>
12
13 <body>
14 <table width="90%" border="0">
15 <tr>
16 <td><h1 align="center">Hula Dance</h1><!-- TemplateBeginEditable name="Heading" -->Hula Dance<!-- TemplateEndEditable --></td>
17 </tr>
18 <tr>
19 <td><center>
```

A red oval highlights the code for the heading: `<!-- TemplateBeginEditable name="Heading" -->Hula Dance<!-- TemplateEndEditable -->`. The design view shows a table with a green header row containing the text "Hula Dance" in a pink box, which is also circled in red. Below the header is a navigation menu with links: "Home ~ History of Hula Dance ~ Hula Events ~ How to Hula ~ Resources".

In the SPLIT view - note the code for your template (named "Heading") and the small blue box in your DESIGN view.

The Properties panel at the bottom shows the "Editable region" with the name "Heading". The Local Files panel on the right shows the project structure:

Local Files	Size	Type	Modified
Site - Project 2 (C:\D...		Folder	4/21/2009 11:30 ...
images		Folder	4/8/2009 2:39 PM
styles		Folder	1/20/2009 6:57 PM
Templates		Folder	4/21/2009 11:25 ...
main.css	0KB	Cascadin...	4/21/2009 11:30 ...

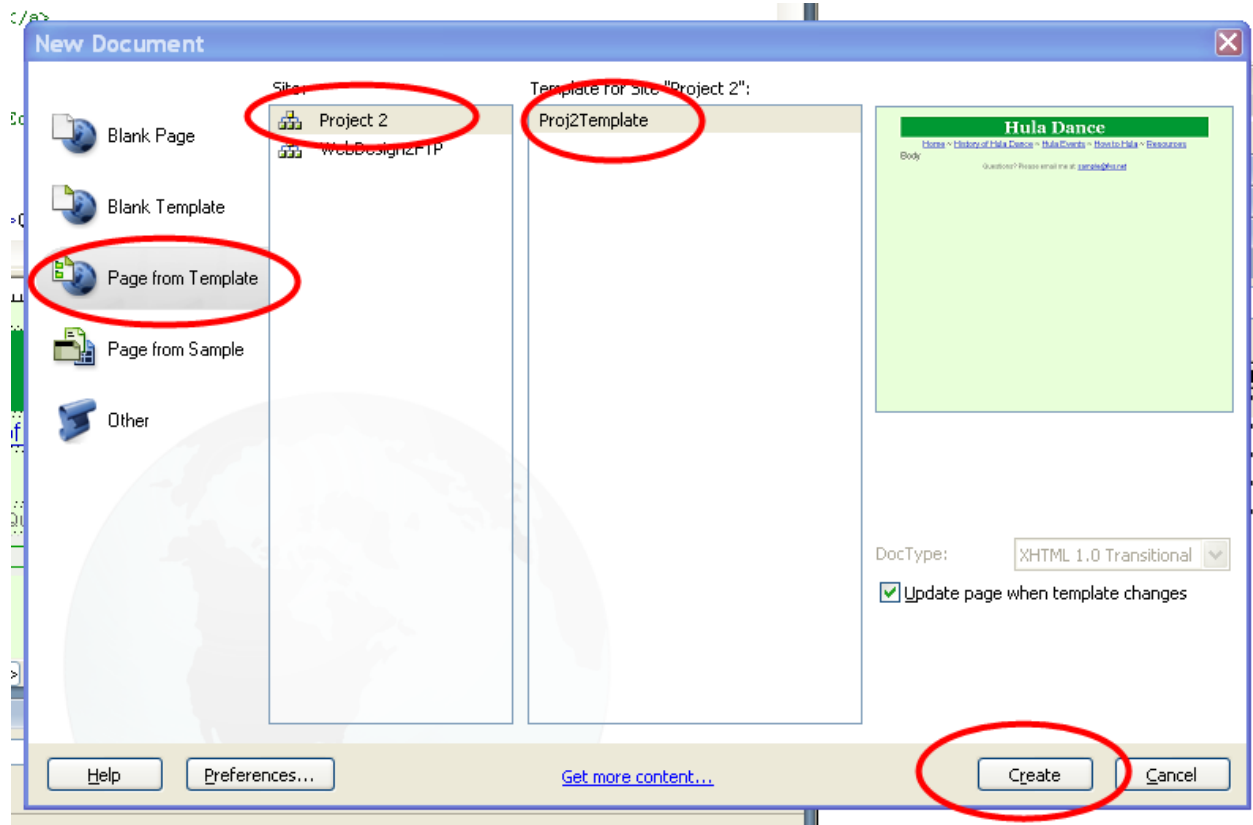
Body

Place your cursor in the third row. Go to INSERT - TEMPLATE OBJECTS - EDITABLE REGION to make this text editable. Name this Region: "Body"

Save your template.

CREATE YOUR FIVE BASIC PAGES

1. Go to FILE - NEW
2. Select PAGE FROM TEMPLATE - PROJECT 2 - and the name of your template. Press CREATE.
3. Save your document as index.html. Remember to change your title and the heading.
4. Repeat for your other four pages.



Upload your files to the FTP. Turn this in as 6.02 😊